



Our Credentials

At Safetell, we support our customers by designing innovative and tested solutions that strengthen an organisation's need to keep what is important to them safe.



30 years of expertise
and innovation in
security products

Contents

Our expertise	–	3
Products	–	4
Service & maintenance	–	5
Trusted by the best	–	6
Safetell online	–	9
Sustainability	–	12
Accreditations	–	13
Evidence of insurance	–	20
Health & safety	–	22
Get in touch	–	23

Our expertise

At Safetell, we help our customers by designing innovative and tested solutions that support organisations with keeping what is important to them safe.

With 100's of installations successfully completed, we use our experience and expertise to benefit our customers. We work with our clients to understand what is important to them and design a bespoke solution that meets the outcome requirement.

Throughout our 30-year history we have helped protect some of the UK's most secure and iconic locations; working with individual clients as well as many contractors and consultants, working on behalf of others. Whether using a standard 'tested and proven' product, or designing a new solution, our success has been built on our ability to innovate and test products to meet our clients' needs, whether that is a vandal resistant transfer unit, or a fully ballistic and blast resistant solution.



Safetell has extensive experience in protecting organisations from theft and harm. Whether it's a bank, police station, healthcare setting, or retail store, where employees are vulnerable to attacks or armed robbery, Safetell has solutions to safeguard the vulnerable.

For instance, Safetell designed and installed a bullet and vehicle-resistant fence with glazed panels at an international school in London to protect children. We establish long-term relationships with our clients to better understand their needs and resolve their problems. Many of our customers have been with Safetell for over 25 years.



The approach Safetell take to finding a solution for our customers is different because it starts with the desired outcome to a problem, not the problem itself. We call this Effects-Based Security Design.

Working with you our customer, we look at the effect you are trying to achieve, in this case to protect staff in the event of an incident without changing the customer experience in the areas affected.

Products

Today's challenges demand comprehensive levels of protection for employees and company assets, protecting against terrorism, criminality and unauthorised entry.



Your solution for secure entrances >

- Security Portals
- Speed Gates/Lanes
- Security Revolving Doors
- Turnstiles
- Automatic Doors



Physically protecting people property & assets >

- Security Doors
- Security Screens
- Moving Screens & Counters
- Security Walling & Partitioning



Helping you transfer cash and assets >

- Night Pay Hatches
- Transfer Units
- Cash Scoops
- Cash Management systems

Safetell's products are available in a range of security rated resistant levels, including manual attack, ballistic attack, blast and fire.

Service & maintenance

Our clients minimise this risk and avoid costly, unplanned, emergency expenditure, by getting their equipment serviced and maintained regularly by Safetell.

We are a customer focused service provider, with a 'repair not replace' mentality, our ethos is to only replace parts as a last resort, when fixing them is no longer an option.

System agnostic, we are always able to give the best advice on equipment regardless of the make and model. This means that we are not trying to sell unnecessary products when they can be repaired and maintained for many years.



Progressive Service

Progressive Service is a non-contracted, purchase order based option, which allows clients to benefit from Safetell's service and maintenance offering without having to fully commit to a contract.

Returning clients on progressive service packages can also take advantage of reduced call-out charges thereafter.

Proactive Service

Safetell's Proactive Service is a contracted alternative, which offers returning clients the peace of mind of enhanced response times, discounts on parts, and preferential rates.

	Progressive Service	Proactive Service
24/7 Service Desk	✗	✓
Meets BS EN 16005	✓	✓
9:00am - 17:00pm PPM and Safety Test	✓	✓
Electronic Visit Report	✓	✓
Health & Safety Advice	✓	✓
Lifecycle Advice	✓	✓
*Standard Response	✓	✓
**Enhanced Response	✗	✓
Call-out and Repair Fee	Chargeable	Reduced Rates
Materials	Chargeable	Chargeable with a 10% discount on parts
Misuse Damage	Chargeable	Chargeable

*Standard Response times are 8 hours for emergency call-outs, 24 hours for breakdowns and 72 hours for general attendance.

** Enhanced Response times are 4 hours within normal working hours.

Trusted by the best



Customer testimonials



Gordon Park | Reactive Works Manager

Safetell were able to provide a solution very quickly, having ordered the screens on Monday, they were installed in the train station by Thursday the same week, which I was very pleased with.

The screens look great, much better than I had expected they would for the low cost, and the fitting was very professional.

c2c



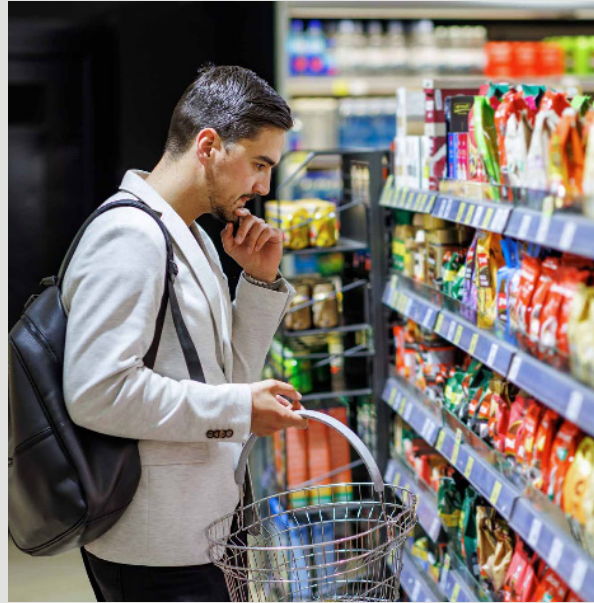
Donald T Maskell | Technical Operations Manager

We have always found Safetell technically competent with a good team of engineers and always look at innovative solutions for saving money i.e. repair instead of replacing.

VINCI
FACILITIES



Customer testimonials



Mr Patel | Franchise Owner

The screens look great and the staff really like the screen and feel a lot safer, especially as the store opens late.

The installation was smooth and we are so happy with the Safetell screen that another screen is on order for our neighbouring store.

Nisa



Prakash Lad | FM Operational Building Surveyor

Safetell provide a very professional service maintaining our auto doors across the branch and office sites.

They also provide technical assistance and solutions to ensure compliance with regulations.

Their helpdesk is always at hand to deal with emergency and routine call outs.

**YORKSHIRE
BUILDING SOCIETY**



Safetell online



30 Years of expertise and innovation in physical security.

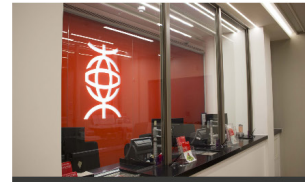
The quality and intelligence your project demands.

[Get in touch >](#)

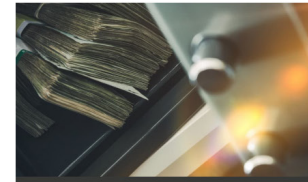
[Learn more about us >](#)



[Your solution for secure entrances >](#)



[Physically protecting people, property, and assets >](#)



[Helping you transfer cash and assets >](#)



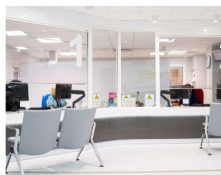
[Automatic Door Service & Maintenance >](#)

We protect people by solving physical security challenges.

Today's challenges demand comprehensive levels of protection for employees and company assets, protecting against terrorism, criminality and unauthorised entry.

[Our Products >](#)

[Speak To Us >](#)



[Sectors & Solutions >](#)



[Products >](#)



[Automatic Door Service & Maintenance >](#)



[Resources >](#)

Safetell online



Resources - our approach.

Here, you'll find a wealth of information on our products, including BIM files, datasheets, and testing videos. We detail our certification levels for manual attack, ballistics, blast, and fire resistance, and our accreditations showcase product quality and reliability.

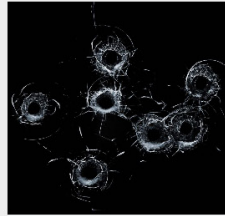
Whether you're an architect, contractor, or end user, this page is a single-point resource to make informed decisions about our products.

Industry-leading protection resistance levels.



Manual Attack

Manual attack protection is measured against sustained attack by professional invaders using a variety of tools such as drills, hammers, and crowbars.



Bullet Attack

Safetell's wide range of solutions are always fully-tested to the requirements of your security strategy, matching your exacting needs.



Blast

We measure the impact, damage, and structural deformation caused by a blast to ensure that the products provide the required level of protection.



Fire

Fire Resistance is rated slightly differently to standard survivability testing of ballistic and blast, with time measurements.

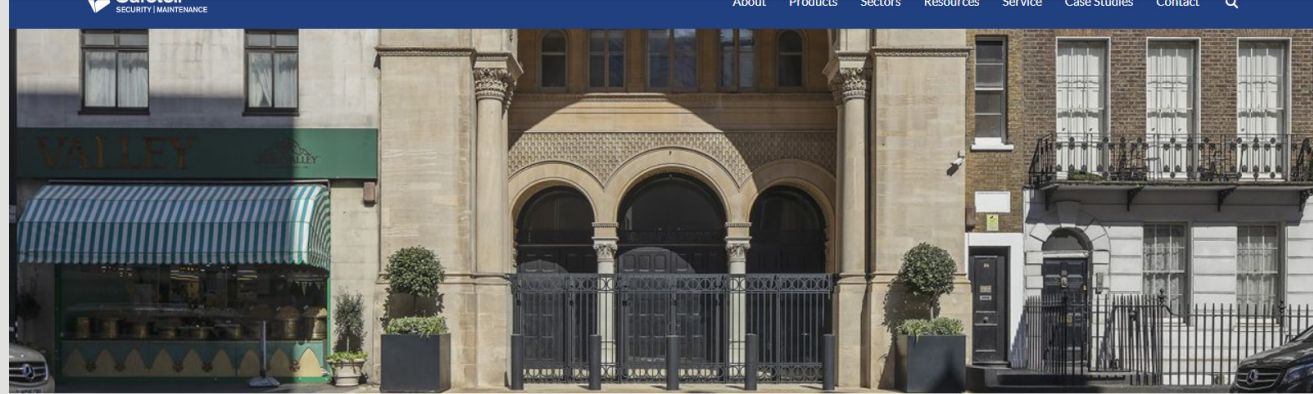
Find us in the Redbook

The LPCB Red Book is a key reference point for specifiers, regulators, designers and end users when looking for certified security products. Each service listed in the Red Book has been independently and thoroughly tested by independent experts to ensure that it delivers to the expected performance level and will continue to do so for many years.

The Safetell Range of Products that have attained LPCB approval are:



Safetell online



Case studies

Throughout our 30-year history, we have helped protect some of the UK's most secure and iconic locations, working with individual clients as well as many contractors and consultants working on behalf of others. Whether using a standard tested and proven product or designing a new solution for a specific problem our design team is on hand to help you find the right solution.

Filter

Apply filters

By Products Ranges

By Products Ranges

- Auto Door Service & Maintenance
- Cash & Asset Protection
- Entrance Control
- Screens and Counters
- Security Doors
- Security Walling & Partitioning
- Transfer Units

By Resistances

- Blast
- Bullet Attack
- Fire
- Manual Attack

By Sectors

- Private Sector
- Public Sector
- Retail Sector



Private Sector Safety For All With Safetell

RNIB (Royal National Institute of Blind People) is the largest community of...



Private Sector Physical Protection For a Digital World

In a digital world driven by data, the growth of the data...



Retail Sector Back To Business In 10 Days

A national petrol forecourt retailer approached Safetell after their shop front was...



Retail Sector Keeping Retailers and Communities at the Frontlines Safe

The Covid-19 pandemic led to an increase in attacks and abuse against...

Sustainability



CARBON REDUCE ORGANISATION CERTIFIED: SAFETELL LIMITED

Carbon Reduce certified means committing to ongoing reductions while achieving annual measurement for at least the Toitū mandatoryⁱⁱ emissions.



Measured emissions to ISO 14064-1:2018 and Programme requirements



Managing and reducing against Programme requirements

This report provides a summary of the annual greenhouse gas (GHG) emissions inventory and management report for Safetell Limited as part of the annual work to achieve Carbon Reduce certification. Additional details of the annual achievements, commitments, and verification are available on request from Safetell Limited.

The purpose of this report is to measure and manage our GHG emissions, which contribute to our overall company sustainability policy and corporate responsibility.

ACHIEVEMENTS

These achievements have been verified in line with ISO 14064-3:2019 and Carbon Reduce Programme Technical Requirements for the 01 May 2021 to 30 April 2022 measurement period.

EMISSIONS MEASUREMENT

Safetell Limited's greenhouse gas emissions for this year (01 May 2021 to 30 April 2022) were 243.84 tCO₂e. Safetell Limited has measured the emissions resulting from its operational activities, purchased energy, and selected impacts from its value chain activities, including business travel, freight, and waste sent to landfill.



MEASURE

Measure your greenhouse gas emissions

We Provide you with the guidance, tools, and software needed to calculate the full carbon footprint



MANAGE

Manage and reduce greenhouse gas emissions at source

Reducing emissions is a win-win for business and the environment. It brings about cost savings and benefits society as a whole



VERIFICATION

Verify your inventory

Our qualified independent Auditors verify your inventory is in accordance with international standards like ISO 14064-1, ISO 14067 or PAS 2050



MITIGATE

Mitigate your carbon footprint (Optional)

Offset unavoidable greenhouse gas emissions to become carbon neutral. Carbon credits allow individuals, organisations and communities to balance the scales on the path to reduction.



MARKET

Market your climate change actions with confidence

Showcase your achievements against ISO 14064-1 and PAS 2050 certification

We are fully certified



CERTIFICATE

of Membership

This certifies that

Safetell Ltd

is a member of the
Automatic Door Suppliers Association

Certificate Date: 1st April 2023

Expiry Date: 31st March 2024



Ken. Price
Managing Director

This is to certify that

Safetell Ltd

is a member of The Automatic Door Installation Association



Anne Saxby, Association Director

100209

Membership Number

10/03/2024

Membership Expiry Date

The Automatic Door Installation Association | 4 Old Park Lane, Mayfair, London W1K 1QW | www.theadia.co.uk | 0207 788 7676



Certificate of Accreditation

This is to certify that

Safetell Ltd

has achieved SafeContractor accreditation

Date: 9th May 2023

This certificate is valid until: 9th May 2024

Certificate number: IU1255

Signed:

Alyn Franklin
Alcumus CEO





Constructionline
Gold Member

CERTIFICATE OF MEMBERSHIP

Safetell Ltd

Registration No: 75148

Date Issued: 15 June 2023

This certifies that the member named above has met pre-qualification requirements appropriate to public and private sector procurement.

A supplier's verification status is dynamic, this certificate proves the Supplier was verified to the named level on the day stated only. For the current status please check the Constructionline platform.



Social Value

CERTIFICATE OF COMPLETION

Safetell Ltd

Registration No: 75148

Date Issued: 15 June 2023

This certifies that the member named above has met the requirements of the Social Value question set

A supplier's status is dynamic. This proves the supplier has completed the Social Value question set on the day stated only. For further details, please check the platform.



SECURED BY DESIGN LICENCE HOLDER

THIS IS TO CERTIFY THAT

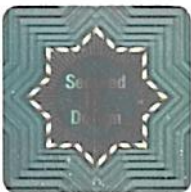
Safetell Limited

OF

Unit 46 Fawkes Avenue, Dartford, Kent, DA1 1JQ

HOLDS A SECURED BY DESIGN LICENCE
VALID IN CONJUNCTION WITH THE CURRENT SCHEDULE UNTIL
12th August 2024

PLEASE REFER TO [HTTPS://WWW.SECUREDBYDESIGN.COM/MEMBER-COMPANIES/SBD-MEMBERS](https://www.securedbydesign.com/member-companies/sbd-members)
FOR THE CURRENT SCHEDULE INFORMATION



G. Ferguson

GUY FERGUSON
CEO, POLICE CRIME PREVENTION INITIATIVES LIMITED

13th August 2023

DATE

Secured by Design



Official Police Security Initiative

Certificate of Approval

This is to certify that the Management System of:

Safetell Ltd

Unit 46, Fawkes Avenue, Dartford Trade Park, Dartford, DA1 1JQ, United Kingdom

has been approved by Lloyd's Register to the following standards:

ISO 14001:2015, ISO 9001:2015

Approval number(s): ISO 14001 – 0004390, ISO 9001 – 0004389

This certificate is valid only in association with the certificate schedule bearing the same number on which the locations applicable to this approval are listed.

The scope of this approval is applicable to:

Design, assembly, installation, repair and maintenance of moving and fixed security screens and other security equipment for applications relating to the protection of personnel and assets.



David Derrick

Area Operations Manager UK & Ireland

Issued by: Lloyd's Register Quality Assurance Limited



001

Lloyd's Register Group Limited, its affiliates and subsidiaries, including Lloyd's Register Quality Assurance Limited (LRQA), and their respective officers, employees or agents are, individually and collectively, referred to in this clause as 'Lloyd's Register'. Lloyd's Register assumes no responsibility and shall not be liable to any person for any loss, damage or expense caused by reliance on the information or advice in this document or howsoever provided, unless that person has signed a contract with the relevant Lloyd's Register entity for the provision of this information or advice and in that case any responsibility or liability is exclusively on the terms and conditions set out in that contract. Issued by: Lloyd's Register Quality Assurance Limited, 1 Trinity Park, Bickenhill Lane, Birmingham B37 7ES, United Kingdom

Carbon Reduce Certification

This is to certify that

Safetell Limited

Meets the requirements of Carbon Reduce certification having measured its greenhouse gas emissions in accordance with ISO 14064 Part 1 2018 and is committed to managing and reducing its emissions in respect of its operational activities of its UK organisation.

Level of Assurance: Limited

Certificate Number: 2022365J

Start Date: 31 January 2023
Expiry Date: 31 January 2026

Osana Robertson



Company Address: Unit 46, Fawkes Avenue, Dartford, Kent, DA1 1JQ, United Kingdom

This certificate should be read in association with the annual disclosure statement which is available at www.toitu.co.nz

Carbon Reduce is administered by Achilles under license from Enviro-Mark Solutions Limited (trading as Toitū Envirocare). Carbon Reduce is an annual certification programme and this certificate only remains valid with an annual surveillance audit.

Find us in the Redbook

The LPCB Red Book is a key reference point for specifiers, regulators, designers and end users when looking for certified security products. Each service listed in the Red Book has been independently and thoroughly tested by independent experts to ensure that it delivers to the expected performance level and will continue to do so for many years.

The Safetell Range of Products that have attained LPCB approval are:



LPS 1175: Issue 8
Cert/LPCB ref. 1617a

CityWall



LPS 1175: Issue 8
Cert/LPCB ref. 1617a

**Stronghold /
Stalwart Lev. 4**

Evidence of insurance

To Whom It May Concern

11th November 2022

As Insurance Brokers to the under noted insured, I can confirm that cover has been placed in accordance with the details shown hereunder:

Client Details

Name: Safetell Limited
Address: Unit 46 Fawkes Avenue, Questor, Dartford, DA1 1JQ

Employers Liability

Insurer: AIG Europe placed via Pen Underwriting Limited
Policy Number: P/CCK/10839
Cover Period: 1st October 2022 to 30th September 2023
Indemnity Limit: £10,000,000 any one claim
Indemnity to Principals Extension: Yes

Public and Products Liability

Insurer: AIG Europe placed via Pen Underwriting Limited
Policy Number: P/CCK/10839
Cover Period: 1st October 2022 to 30th September 2023
Indemnity Limit: £5,000,000 any one claim in respect of Public Liability, but in the aggregate in respect of Products Liability
Indemnity to Principals Extension: Yes

Excess Public and Products Liability

Insurer: Chubb European Group SE
Policy Number: UKCASO22299121
Cover Period: 1st October 2022 to 30th September 2023
Indemnity Limit: £5,000,000 in excess of primary £5,000,000 (total £10,000,000 limit of indemnity)
Indemnity to Principals Extension: Yes

 @AstonLark  Aston Lark

Your **Aston Lark Office:** One Creechurch Place, London, United Kingdom, EC3A 5AF
Aston Lark Limited Registered in England and Wales No: 02831010. Registered office: One Creechurch Place, London, United Kingdom, EC3A 5AF. Aston Lark Limited is authorised and regulated by the Financial Conduct Authority, No. 307663.



Evidence of insurance

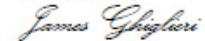
Subject to the Insurers' policy terms, conditions, warranties and exclusions.

Please Note:

The above information is correct at the time of writing and is provided to you as a matter of information only. It has not been prepared for, and may not meet the requirements of, any other party. Any third party to whom it is supplied should therefore take such steps as it considers necessary to satisfy itself that its own requirements have been met. This letter does not make the person or organisation to whom it has been issued an additional Insured, nor does it modify in any manner the Contract of Insurance between the Insured and the Underwriters and the policy cover is of course subject to the Terms and Conditions. There is no obligation on the signatory to advise of any changes to the cover provided.

Should you have any queries or require any additional information, please do not hesitate to contact me.

Yours faithfully,



James Ghiglieri

Aston Lark Limited
Tel: 020 7543 2848
Email: James.Ghiglieri@astonlark.com

Health & safety

HEALTH & SAFETY POLICY STATEMENT

This is the Health and Safety Policy Statement of Safetell Ltd (hereinafter referred to as 'the Company') as required under Section 2(3) of the Health and Safety at Work etc. Act 1974.

It is the general policy of the Company to ensure the health, safety and welfare at work of employees, contractors, visitors and members of the public who may be affected by its work activities.

Furthermore, the Company will endeavor to comply with its legal duties, responsibilities and obligations under the relevant health and safety legislation, together with any relevant codes of practice and guidance notes issued by the Health and Safety Executive (HSE).

The Company will attempt to achieve these objectives by: -

- A. Providing and maintaining a working environment that is, so far as is reasonably practicable, safe and without risks to health, and complies with all relevant legal requirements.
- B. Providing and maintaining suitable and satisfactory facilities and arrangements for the welfare at work of employees.
- C. Providing and maintaining, so far as is reasonably practicable, premises and other places of work that are safe and without risks to health, including safe means of access and exit.
- D. Ensuring, so far as is reasonably practicable, that plant, machinery, equipment or appliances for the time being on the company premises, or otherwise used by employees, are safe and without risks to health.
- E. Providing such information, instruction, training and supervision as is necessary to ensure, so far as reasonably practicable, the health and safety at work of employees.
- F. Ensuring that the use, handling, storage and transport of articles and substances are, so far as is reasonably practicable, safe and without risks to health.
- G. Consulting with employees on a regular basis regarding matters of health and safety.
- H. Identifying all reasonably foreseeable hazards and assessing the associated risks with a view to eliminating, reducing or controlling them.
- I. Reviewing and up-dating of this policy on a regular basis.
- J. Ensuring that all employees have access to a copy of this policy.

Signed:	<i>NShannon</i>
Job Title:	Nick Shannon – Managing Director
Date:	01/03/2023

Get in touch

Speak to one of our experts about your bespoke solution

sales@safetell.co.uk

safetell.co.uk

+44 (0)1322 223 233

